



NUI Galway
OÉ Gaillimh



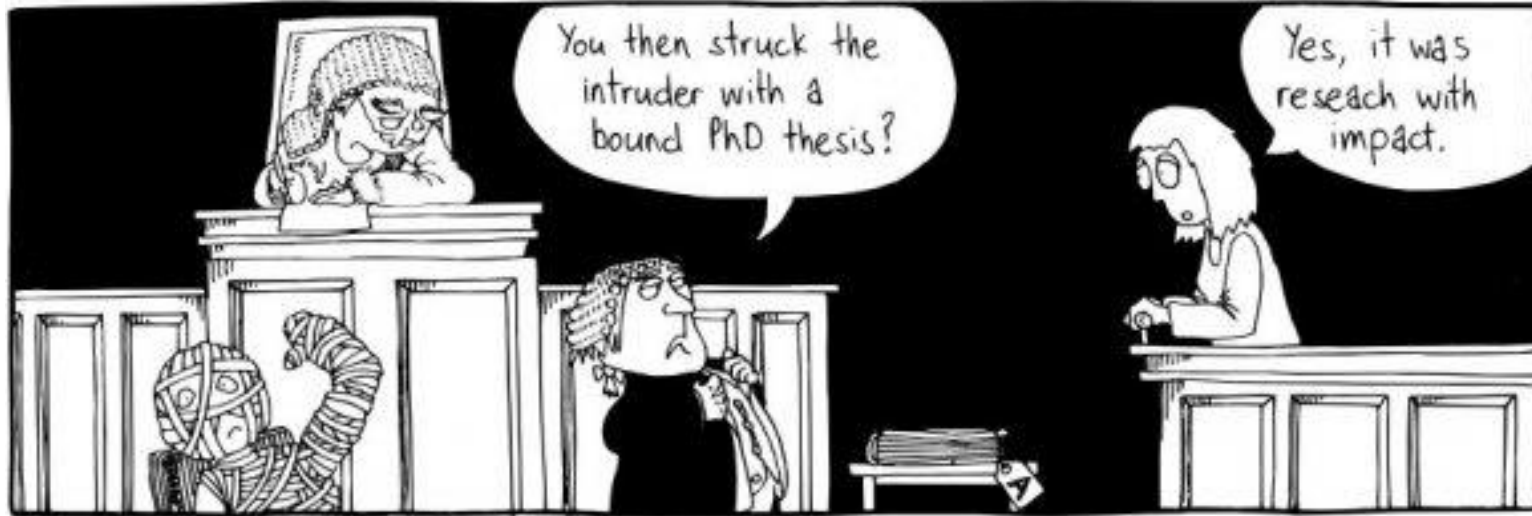
Developing a Culture of Research Impact

Examples of Practices at Coimbra Group Universities



Dr Ann Ryan, Chair, Coimbra Group Research Support Officers Working Group

What is Research Impact?

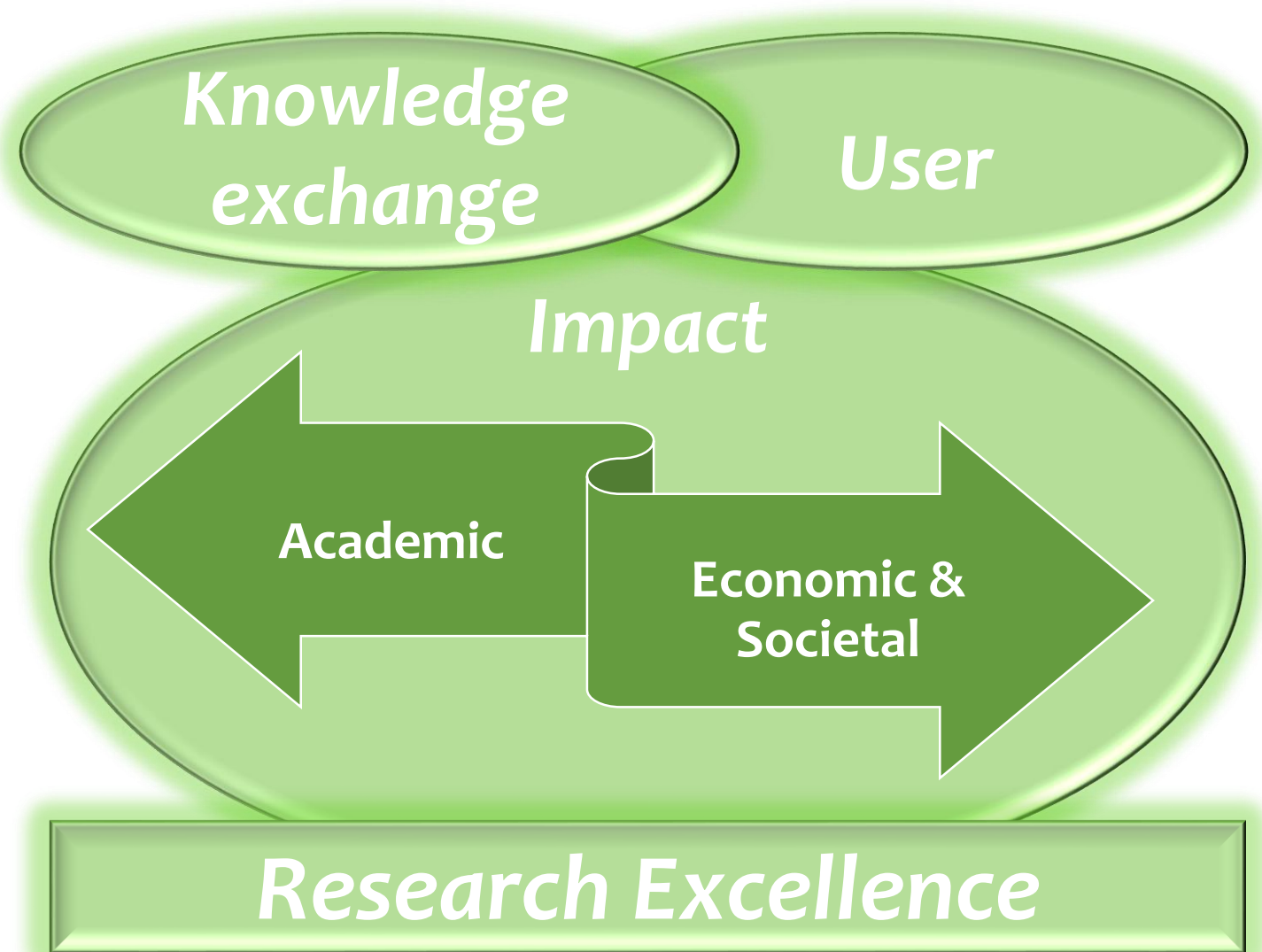


<https://researchimpact.files.wordpress.com/2011/10/research-impact-cartoon.jpg>

Impact: demonstrable contribution that excellent research makes to society and the economy.

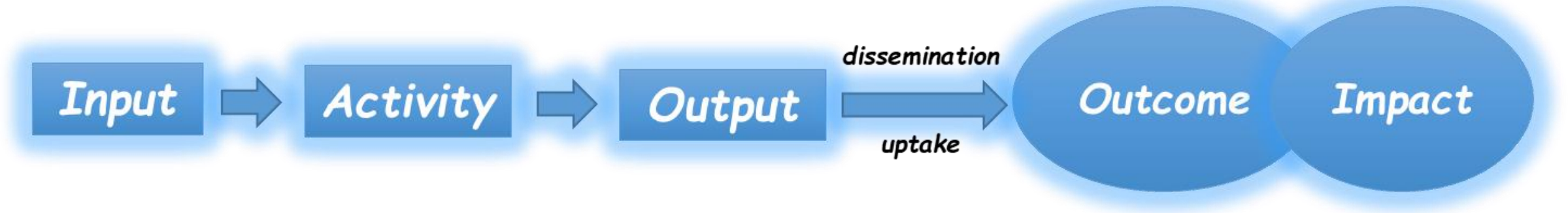
i.e., the direct and indirect ***influence*** of research or its effect on an individual, a community or society as a whole, including benefits to our economic, social, human and natural capital.

Hallmarks of Impactful Research



The Impact Journey - Pathways to Impact

- Making research make a difference



- Consider impact throughout the research lifecycle
- Integral to the research
- Collaborative partnerships create more impact and value
- Build SMART objectives into Pathway to Impact



Research

????

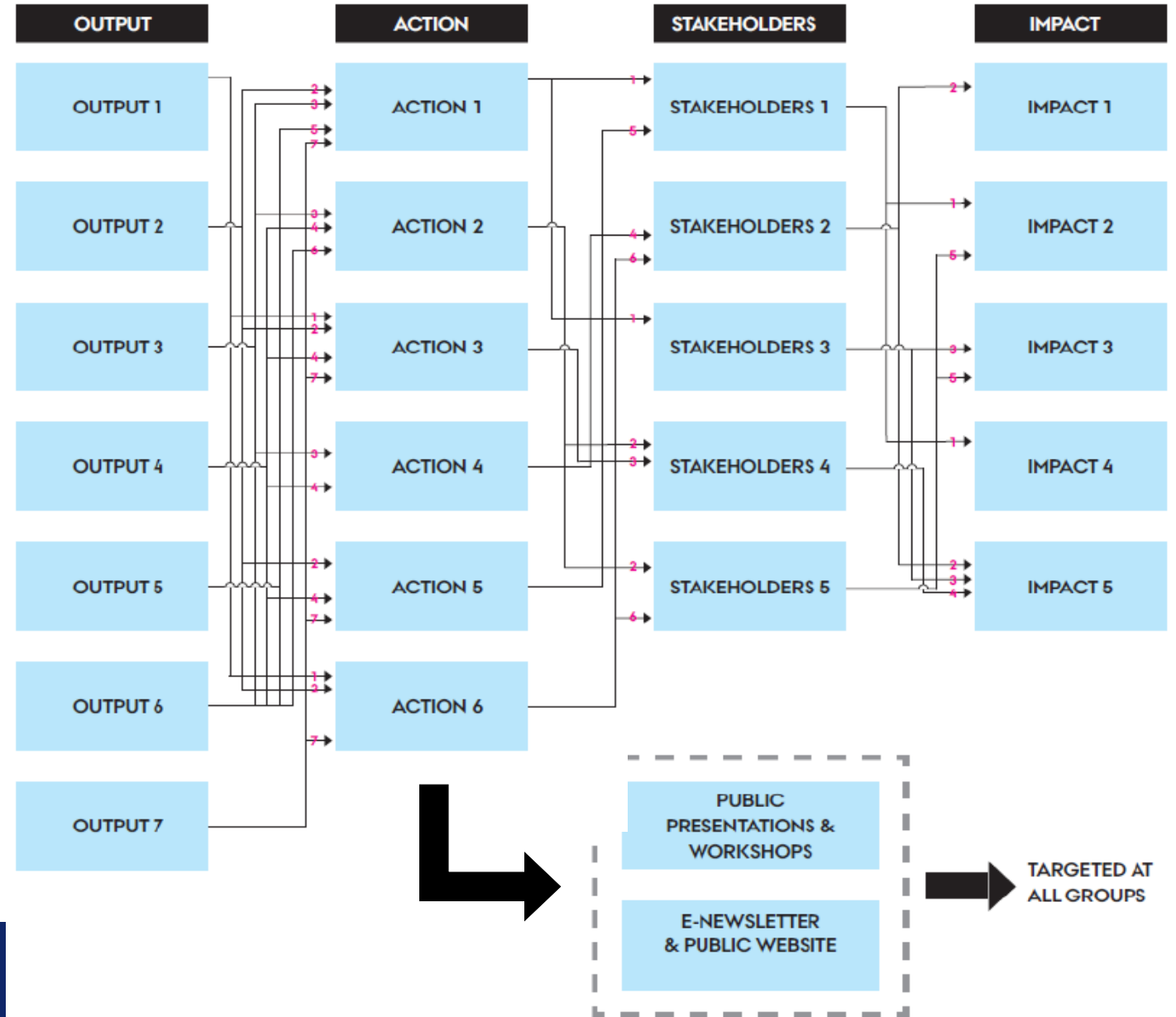
Impact

*Practices for Developing a Culture of Research
Impact within our institutions*

Aarhus University

IMPACT Guide

- Analysis of Evaluation of Summary reports with AU participation
- Literature Studies
- Stakeholder interviews
- Map pathway by identifying:
 - **Outputs**
 - **Actions**
 - **Stakeholders**
 - **Communication strategy**
 - **Impact**





“We study genetics of evolutionary adaptations in immunity leading to animal disease resistance.”

„Our research can contribute to improvements in biomedicine and biotechnology and is transferable mainly into applied practice in agriculture, veterinary science and nature protection.“



Research Impact Toolkit, Research Impact Funds, Impact Officers

Study Here	Colleges & Student Experience	Research & Collaboration	Alumni	International
Research and Innovation Services				
You are in: Home ⇒ Research and Innovation Services ⇒ Impact, Publication and Data ⇒ Impact Toolkit				

Research and Innovation Services (RIS)
About RIS
Find Funding
Applications and Awards
Impact, Publication and Data
Impact Toolkit
Understanding Impact
Identifying Impact
Evidence for Impact
Dissemination and Impact
Evaluation and Tracking
Joint Pathways
Impact for REF
Contacts and Support
A-Z of resources
Commercialisation
Business and Partnership

Impact Toolkit



[Understanding research impact and its importance](#)



[Identifying impact / Pathways to impact](#)



[Quantifying / Capturing impact / Collecting and storing evidence](#)



[Dissemination and Impact](#)



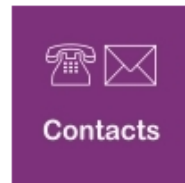
[Evaluation, Quality and Tracking Readiness](#)



[Joint Pathways](#)

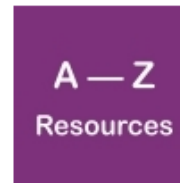


[Impact for REF / Submission 2014](#)



Contacts

[Useful Contacts / Impact Support](#)



A — Z Resources

[A - Z of resources](#)



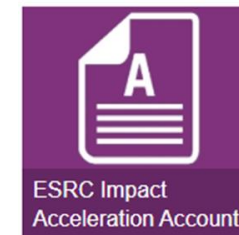
Research Impact Fund



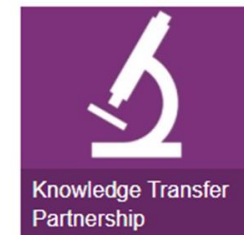
EPSRC Impact Acceleration Account



STFC Impact Acceleration Account



ESRC Impact Acceleration Account



Knowledge Transfer Partnership



Economic Development Funding



A&H Impact Development Fund



Confidence in Concept



P & E Travel & Subsistence Fund

KU Leuven – Support Mechanisms

Funding category

University Research Funds
(131 mio euro/y) - BOF

University Industrial Research
Funds (12,6 mio euro/y) - IOF

ENGAGING WITH SOCIETY

Experts by experience

INNODIA Kyle Rose diabetes ...



INNODIA project on type 1 diabetes (EU funding through IMI)

[READ MORE](#)

[WATCH MORE](#)



[Home](#) > [Support](#) > Impact

MAXIMIZING THE IMPACT OF YOUR RESEARCH



IMPACT THROUGH DISSEMINATION

- > New ways of reaching your peers
- > Demonstrating impact

[OUR SUPPORT](#)

IMPACT ON SOCIETY, ECONOMY, POLICY

One of the university's missions is service to society. We work through research and education.

Furthermore, funding agencies are increasingly demanding impact in addition to impact on research. Applicants need to demonstrate their research on society, economy and/or policy. This requires a change in the research design.

TELLING STORIES OF IMPACT: HOW UNIVERSITY RESEARCH AND INNOVATION MAKE A DIFFERENCE



Listening to affected citizens

ETN NEW-MINERS meet 'DE L...



NEW-MINE EU Training Network on Enhanced Landfill Mining

[READ MORE](#)

NUI Galway Institutional Review of Research Performance – 2016-2018

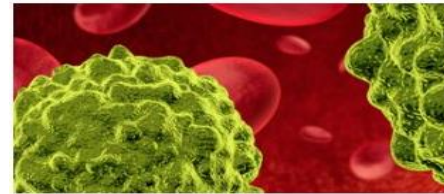


Rating	Research outputs (50%)	Research environment (40%)	Societal impacts (10%)
4	World-leading originality	World-leading quality	Outstanding reach and significance
3	Internationally excellent	Internationally excellent	Very considerable impacts
2	Recognised internationally	Recognised internationally	Considerable impacts
1	Recognised nationally	Recognised nationally	Recognised but modest impacts
0	Unclassified	Not conducive	Little or no reach

- Quality ratings per School
- School-level action Plans
- University-level Action Plan
- Impact case studies – more focus required

Trinity College Dublin Research Impact Strategy

- ‘Research for Impact’ embedded in strategy
- *Advancing Multi-disciplinary Initiatives* one of 7 key enabling initiatives in draft Research Charter
- Inter-disciplinary research a priority
- 19 College thematic focused Inter-disciplinary research clusters
- 7 College Research Institutes



Cancer

Research towards understanding, treatment and prevention of this pervasive disease



Creative Arts Practice

A creative and innovative approach for music, theatre and digital film



Digital Humanities

Converging science and the humanities to translate established humanities techniques into new technologies



Genes & Society

Extending and utilising our knowledge of genes and their function for enhanced understanding and invention

- *Strategic Support Fund for linking Humanities and Medicine/Neuroscience*
- *INTREPID COST Action – to achieve more effective Inter-disciplinary research*
 - *SHAPE-ID Project – to achieve best value from inter-disciplinary activities*



UPPSALA
UNIVERSITET

- Training in entrepreneurship
- Engage politicians
- The Good City – collaborative project with municipality
- Centre for Integrated Research on Culture and Society



- Collaboration is integrated in research and education
- Encouraging interplay between academia, business and society
- Offering continuing professional development
- Facilitating contacts between students and business
- Stimulating contacts between researchers and business
- Forging contacts with alumni

Common Practices/Mechanisms Across Institutions



Research Impact – how to maximise/develop a Culture?

- Difficult to operationalise in practice
- Very theoretical
- Non-linear – not from a single project
- Tendency to reduce impact to effects which are easier to grasp,
e.g., short-term v's long-term (beyond project)
tangible v's intangible
intended v's unintended
- Evidence of impact
Monitor, evaluate and keep evidence
measure intangible??

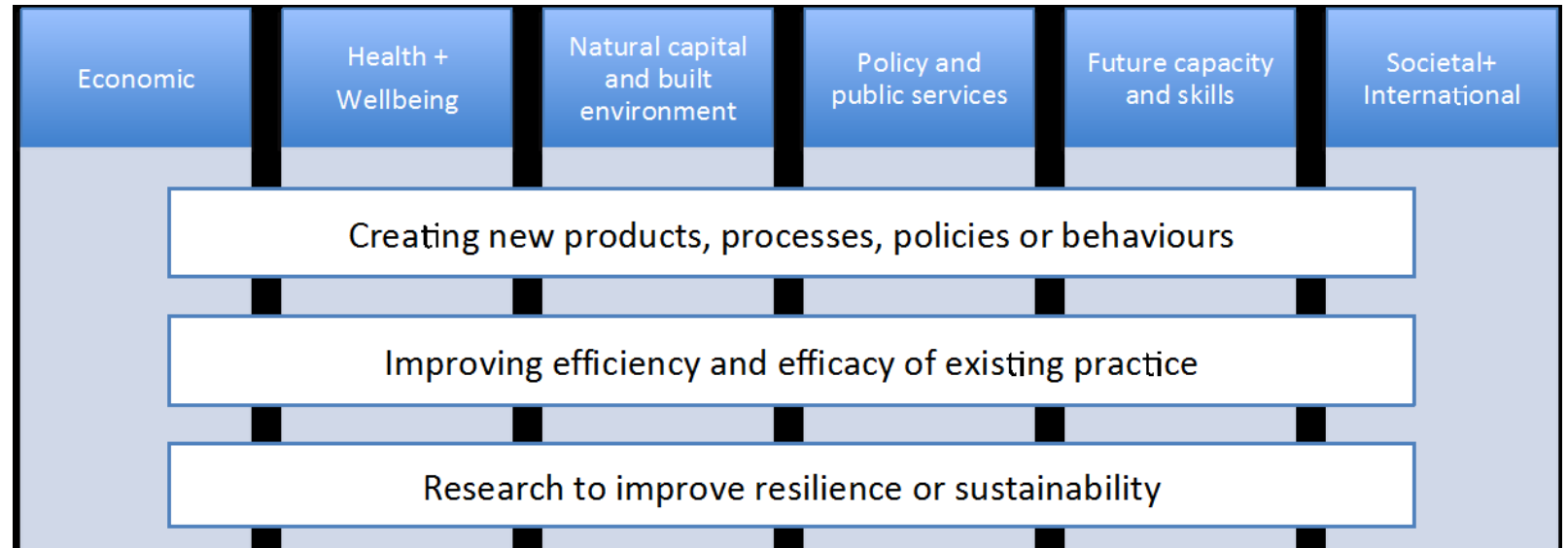


"I see journal articles, patents, legal fees and then... nothing."

<https://www.ifm.eng.cam.ac.uk/research/grant-writers-handbook/research-impact/>

Realising the Potential of Research – Inter-disciplinarity key

- Flexibility at proposal stage
- Transdisciplinary approach
- Interdisciplinary Research Institutes
- Co-production/Co-creating/Co-writing
- Open Access
- SSH integration



Challenges of Inter-disciplinary research

- Definition?
- Peer-review?
- Evaluate?
- Discipline boundaries

Societal Readiness Level



A way of assessing the level of societal adaptation readiness of, for instance, a particular social project, a technology, a product, a process, an intervention or an innovation (whether social or technical)

Our Role in Enabling Challenge-led/Mission-oriented/ Impactful Research

- Integrate existing mechanisms to underpin the Culture
- Facilitate Non-academic partnerships
- Facilitate trans-disciplinary collaborations
- More accessible language
- Embed research support across lifecycle of project
- Research Impact Officers/Case Studies
- Seed funding
- Horizon scanning – research landscape
- Horizon scanning – policy landscape

→ Facilitate a seed change in thinking





Research

????

Impact

*Delivering: Developing a Culture of Research
Impact within our institutions*